



# Construction of the Science Building



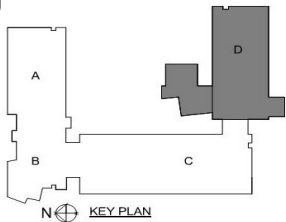
Issue 5

1/10/2013

**MIDDLE TENNESSEE**  
STATE UNIVERSITY

## Steel Erection Near Completion

**Turner**  
Building the Future



### Up to Date

- Area A&B Steel 90% Complete
- Area C deep under-ground complete
- Penthouse Slab Area C Complete
- Concrete Slabs Area D 100% Complete

### In the Now

- Topping out entire building in Area A 1/11/13
- Area D CMU Walls
- Area C MEP prep
- Area D Roofing Installation
- Steam Line Ongoing

### A Look Ahead

- Third Floor Area C Elevated Deck Pours 1/16-18
- Exterior framing sheathing Area D
- Kneewall and thickened slab at Area C penthouse



Above: Third floor Area D completed slab. Now Electrical workers start their rough-in for the floor.



Above: A view at dusk from the library roof.



Above: The start of the CMU Block walls are in place on the first of Area D in the East corner. Also shown is the completed first floor concrete slab.



Above: Two Steel Connectors wait to receive two beams being swung in over head while erecting the top two floors of area B.

### The Breakdown

Man-hours 59,000

Concrete 2,950cy

Decking 200,000 sf

Steel 1,750 tons

Today	Fri	Sat	Sun	Mon
Jan 10	Jan 11	Jan 12	Jan 13	Jan 14
Cloudy, showers around; warm	A passing morning shower	Clouds and sun with a shower	Mostly cloudy, rain possible	Chance for rain; cooler
68° Lo 59°	70° Lo 62°	74° Lo 58°	64° Lo 36°	51° Lo 32°







**Ox Blue**  
Construction Camera Service

